

### PRODUCT INFORMATION

eco-parge is a high performance modern parge coat that has been specifically designed and tested for fast application onto Porotherm clay blocks. Engineered to increase air tightness and to optimise the sound and thermal performance of Porotherm clay block walls, prior to dry lining. eco-parge has been designed to be applied by brush or roller ensuring fast de-skilled application. An ultra high polymer modified product, on application the cross linked polymers grab to the inside of the open joints then the X-pan technology takes effect, as the product starts to cure it expands fully filling and sealing the joints.

### PLEASE NOTE

The weather conditions for application and drying are critical. Do not apply if frost is forecast, in wet conditions when RH is above 85%, in temperatures below +5°C or above +30°C, and for a min of 24hr after application. Do not apply to elevations in direct sunlight, or to substrates which are hot or below +5°C. The render must be protected against any rain, direct sun or wind in the first 24 hours after application.

### PREPARATION

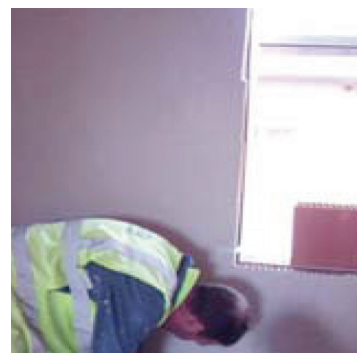
All surfaces must be sound, clean, dry and free of any material which may impair adhesion.

### MIXING

eco-parge should be mixed with clean water at a rate of approximately 9-10 litres per 25kg bag using a suitable drill with whisk attachment, mix for 5 min, allow standing for 5 min then remix. This process allows the chemical additives to dissolve and activate.

### NOTE

eco-parge may stiffen on standing. Re-mix the product to regain a workable consistency but do not add any more water. eco-parge has an open time of 3 hours.



### TYPICAL SUBSTRATE


Porotherm clay block

### FEATURES

- X-pan technology
- Highly flexible
- Vapour permeable
- Eco-friendly
- C2 adhesion
- Odourless

### COLOUR

White

<p>1289</p>  <p>La Roc Dalton Industrial Estate, Dalton, North Yorkshire YO7 3HE 13</p>	
<p><b>eco-parge</b></p> <p>Improved deformable cementitious mortar for use internally in buildings</p> <p>EN 12004</p>	
Reaction to fire	Class F
Release of dangerous substances	See MSDS
Initial tensile adhesion strength	≥ 1.0 N/mm <sup>2</sup>
Tensile adhesion strength after water immersion	≥ 1.0 N/mm <sup>2</sup>
Tensile adhesion strength after heat aging	≥ 1.0 N/mm <sup>2</sup>
Tensile adhesion strength after freeze-thaw cycles	≥ 1.0 N/mm <sup>2</sup>
Open time: tensile adhesion strength	≥ 0.5 N/mm <sup>2</sup> after no less than 20 min
Extended open time: tensile adhesion strength	≥ 0.5 N/mm <sup>2</sup> after no less than 30 min
Deformable adhesive: transverse deformation	≥ 2.5 mm and <5 mm

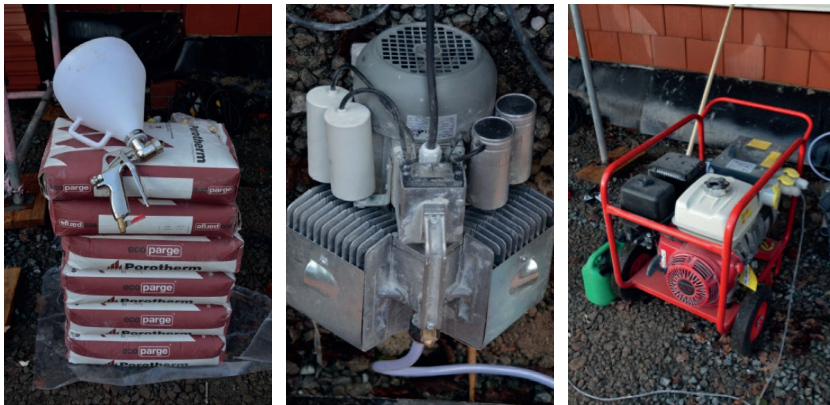
### APPLICATION

#### Brush

Using a soft-headed broom, load the brush with the product then work the product into the joint ensuring the product is filled into the joints. Once the joints are filled and loaded, stroke the material out in a horizontal manner to cover the face of the blocks, this will flatten the surface out, ensuring a level surface is achieved.

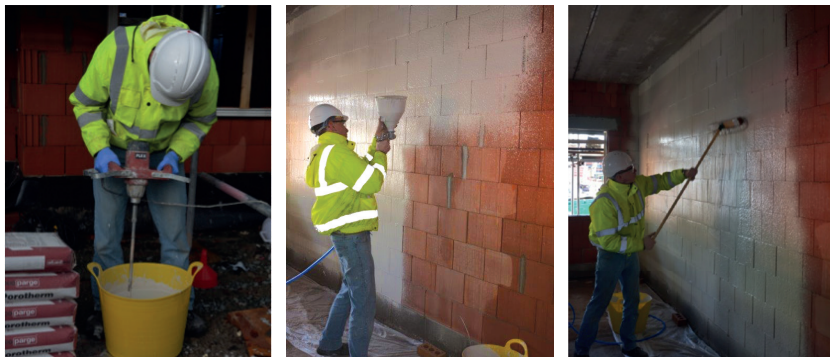
#### Spray Hopper

Spray application is designed to speed up the process of application, by mechanically placing the material on the wall ready to finish. You will require an air fed spray hopper which is available from suppliers such as [www.refina.co.uk](http://www.refina.co.uk)



A good supply of power and air pressure is essential, this can be sourced from an on site generator and air compressor, air pressure must be at a minimum of 6 bar.

Mix eco-parge in the same manner as hand application, then pour into the spray hopper. Connect to the air line then start to spray the wall starting from the ceiling down to the floor. Once you have covered an area take a soft brush and finish the material into the joints.



### NOTE

Product is to be applied to the internal, room facing block work. (Both block faces & joints)

### COVERAGE

Approximately 20sqm per bag. Note: These estimates take no account of wastage.

### PACKAGING & STORAGE

eco-parge is supplied 25kg paper sacks; palletised (40) bags and shrink wrapped. When stored unopened in a dry place at temperatures above 5°C, shelf life is 12 months from date of manufacture.

### QUALITY CONTROL

All products are factory blended, tested and packaged to quality control procedure in accordance with BS EN ISO 9001 series.



For further information please refer to the eco-parge data / health and safety sheets. This product is classified and therefore the following hazardous and precautionary statements are associated with the product:

#### Hazardous Statements:

H315 – Skin irritant. 2  
H318 – Eye damage. 1

The preparation produces an alkaline reaction when exposed to moisture. Please take this into consideration when processing the material and avoid extended contact with the skin, or make sure to wear gloves.

#### Precautionary Statements:

- Keep out of reach of children
- Do not breathe dust
- Do not get in eyes, on skin, or on clothing
- IF IN EYES: Wash with soap and water, get medical attention
- IF ON SKIN: Wash with soap and water
- Wear protective gloves, eye and face protection
- IF SWALLOWED: Get immediate medical advice / attention
- Dispose of contents / container to hazardous waste collection point

**THE PREPARATION IS LOW CHROMATE IN ACCORDANCE WITH EU-GUIDELINE 2003/53/EC**